



## ***V6 Basic Series. Top of their class.***

What do you really want from an outboard? If it's phenomenal power and acceleration, as well as clean, quiet, smooth economy – and reliable all-round performance – then look no further.

Thanks to Yamaha's unique, fuel-efficient EFI system, microprocessor ECU, Variable Camshaft Timing, gas re-burning technology and noise reduction systems, the answer's right here. And with our sophisticated diagnostic system working via a plug-in computer link to show engine and performance data, maintenance is a breeze.

Like all EFI engines, the F225 and F200 can be linked to the Yamaha network system, so you can choose from the wide range of digital gauges and instruments from Yamaha.

- 24-valve V6 – smoothness, power and reliability
- EFI for cleaner, more efficient performance
- Double Overhead Camshaft (DOHC) – clean efficiency
- PrimeStart™ system for easy starting
- High output alternator
- Compatible with Yamaha Digital Network system
- SDS (shift dampening system) – F200 only
- Counter-rotating propeller models available
- Wide Range Power Trim & Tilt for smooth control
- Simple, quick-connect fresh water flushing device
- Yamaha's Ideal Anti-corrosion Protection

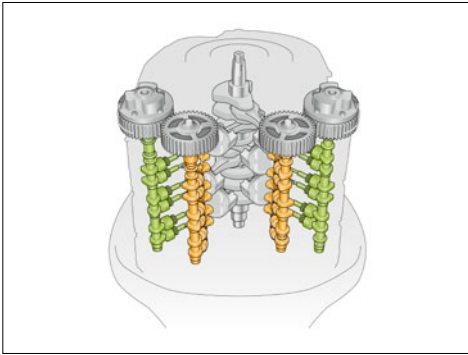


## ***Technology the world trusts***

For offshore adventures, the sporty F225 and the exciting F200 deliver you a perfectly proportioned and ultra-reliable power package.

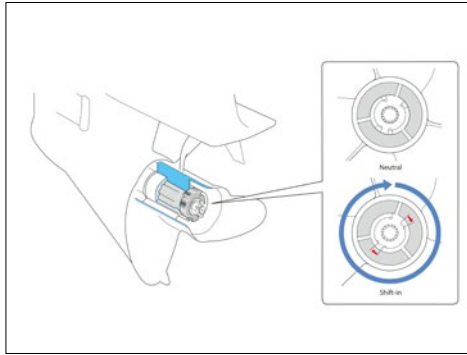
The very latest Yamaha marine technologies, with their revolutionary engine layouts and ingenious intake and exhaust systems, offer you supreme efficiency, aided by micro-computer controls which monitor every aspect of engine performance, from fuel mixture and combustion efficiency to maintenance scheduling.

Without compromising on power, performance or usability, our specially designed marine engines also help preserve the environment through the use of pioneering clean-burn technologies.



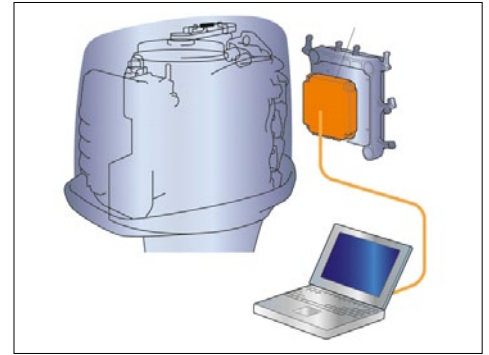
### 24-valve, 3.3 litre 60° V6 with DOHC, EFI & VCT

A well proven, thoroughbred engine design that features double overhead camshafts (DOHC) and 4 valves per cylinder. Variable camshaft timing (VCT) delivers increased combustion efficiency across the RPM range. This combination of advanced technologies gives class-leading horsepower-per-litre



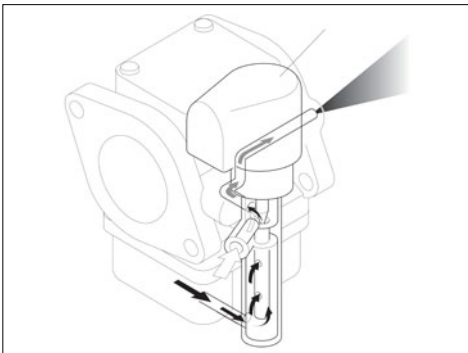
### SDS (shift dampening system ) - F200 only

Eliminating the 'clunk' sound normally associated with moving between gears, Yamaha's patented Shift Dampener System (SDS) uses a splined aft washer and a splined runner hub to absorb noise and vibration. This carefully engineered solution brings smoother, quieter gear shifts.



### Micro-computer ECM (Engine Control Module)

A reliable micro-computer is the 'brain' of your engine. By constantly monitoring all data inputs and settings, it helps to ensure smooth running and optimised ignition timings – as well as automatically activating warning and protection systems. A handy access port lets authorised Yamaha dealers easily diagnose any problems.



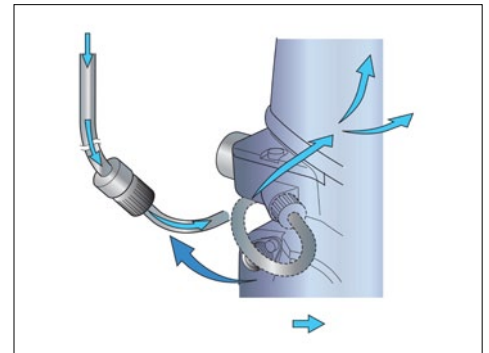
### PrimeStart™

Start your outboard engine as easily as a car – even from cold. Exclusive to Yamaha, the PrimeStart™ system ensure that the engine fires first time, every time you engage either the Electric or Manual Start.



### Digital Network Gauges

A range of digital instruments give you access to the information you need to maximise engine performance and efficiency. A multi-function Tachometer displays RPM hours, trim angle, oil pressure and warning lamps. The combined Speed/Fuel Management gauge shows speed, tank capacity and fuel economy data.



### Fresh Water Flushing system

The easy-access, front-mounted connector means you can flush salt and dirt from the waterways after use – or at any time – without having to run the engine. Just connect a hose and run fresh water through. A very quick and efficient way to reduce corrosion and extend the life of your outboard.

Model	F225C	F200
<b>Engine</b>		
Engine type	4-stroke	4-stroke
Displacement	3352cc	3352cc
No. of cylinders/Configuration	V6 (60°), 24-valve DOHC	V6 (60°), 24-valve DOHC
Bore x stroke	94.0 mm x 80.5 mm	94.0 mm x 80.5 mm
Prop shaft output at mid range	165.5kW / 5,500 rpm	147.1kW / 5500 rpm
Full Throttle Operating Range	5,000 - 6,000 rpm	5,000 - 6,000 rpm
Lubrication system	Wet sump	Wet sump
Electronic Fuel Injection	EFI	EFI
Ignition / advance system	TCI/Micro-Computer	TCI/Micro-Computer
Starter system	Electric	Electric
Gear ratio	2.00 (30/15)	2.00 (30/15)
<b>Dimensions</b>		
Recommended boat transom height	L:508mm	X:635mm
Weight with propeller	F225CETL: 273.0 kg	F200CETX: 278.0 kg, FL200CETX:278.0 kg
Fuel tank capacity	option	option
Oil pan capacity	4.5 litres	4.5 litres
<b>Additional features</b>		
Steering	Remote Control	Remote Control
Throttle and Shift Controls	Remote Control	Digital electronic remote control
Trim & Tilt method (trim angle)	Power Trim & Tilt	Power Trim & Tilt
Light coil / Alternator Output	12V - 44A	12V - 44A
Propeller	Options available	Options available
Remark	The KW in this sheet is based on the ICOMIA 28 standard, measured at the prop shaft	The KW in this sheet is based on the ICOMIA 28 standard, measured at the prop shaft



### The Yamaha Chain of Quality

Yamaha technicians are fully trained and equipped to offer the best service and advice for your Yamaha product. For this reason, Yamaha strongly recommends visiting an official Yamaha dealer for all your service requirements. Yamaha Marine Parts & Accessories are especially developed, designed and tested for our Yamaha product range. Yamaha also recommends the use of Yamalube®. Yamalube® is our own range of high-tech lubricants, the lifeblood of Yamaha engines. They are developed to carry on working effectively, no matter where you drive. Besides functional and style accessories, Yamaha offers a range of high quality, innovative boating gear. An extensive range of casual wear is also available. For more information go to: [www.yamaha-motor-acc.com](http://www.yamaha-motor-acc.com)



All information in this catalogue is given for general guidance only and is subject to change without prior notice. Photographs may show boats being driven by professionals and no recommendation or guidance in respect of safe operation or style of use is intended or implied by the publication of these images. Always respect the local maritime regulations. Always wear the recommended personal floatation device and safety equipment when boating.